

# BURLINGTON COUNTY HEALTH DEPARTMENT



Photo credit: Robert  
Barnes - 2015  
Environmental Photo  
Contest Winner of the  
Adult Professional  
Category

July 2016

## 2015 Annual Report

This report summarizes the activities the Burlington County Health Department conducted during the 2015 calendar year to meet the public health needs of Burlington County residents, visitors, and businesses.



# Burlington County Health Department

## 2015 ANNUAL REPORT

### Table of Contents

Message from the Burlington County Freeholder Director..... 4

Message from the Health Department Director..... 5

Department Contact Information..... 6

Jurisdictions Served..... 7

What does Public Health do?..... 8

Administration ..... 9

Health Education..... 10

Public Health Preparedness and Response..... 11

    Burlington County Medical Reserve Corps (MRC) ..... 12

Community Nursing Service..... 13

School Immunization Record Audits..... 14

Clinical Services..... 14

    Sexually Transmitted Diseases (STDs)..... 15

Environmental and Consumer Health..... 16

    Campground / Youth Camp Program..... 16

    Public Recreational Bathing Program ..... 17

    Body Art Program ..... 18

    Retail Food Program..... 18

    Tanning Program ..... 20

    Onsite Wastewater Disposal Systems ..... 20

    Potable Water Control Program..... 20

    Water Pollution Control Program..... 21

    Air Pollution Control ..... 21

    Noise Pollution Control..... 21

    Solid Waste Control..... 22

    Hazardous Waste Control Program..... 22

    Housing Maintenance Program..... 23

    Public Health Nuisance Program ..... 23

    Pesticide Control Program ..... 24

    Right to Know Program..... 24

    Tobacco Program ..... 24

    Lead Poisoning Control Program..... 24

Animal Care and Management..... 25

    Burlington County Animal Shelter ..... 26

Weights and Measures..... 27

Women, Infants, and Children (WIC)..... 28

Medical Examiner’s Office ..... 28





## Message from the Burlington County Freeholder Director

**BRUCE GARGANIO**

Dear Community Members,

Year after year, the Burlington County Health Department continues to provide outstanding public health services to our residents, visitors, and businesses. The 2015 BCHD Annual Report provides an overview of the activities conducted by Health Department staff across all program areas during the calendar year. This report showcases the great work staff does to ensure Burlington County remains a healthy place to live, work, and play.



A few years ago, the Burlington County Board of Chosen Freeholders launched the *Health Starts Here* initiative to encourage residents to make more healthful choices as well as to expand access to more healthful activities and options. This past year, Burlington County launched the next phase of this program... *Wellness Works* – a *Health Starts Here* initiative for Burlington County employees. The Board wants the best for Burlington County, and that starts with our employees. With the expertise from our partners at Virtua, and the Health Department we are now able to provide employees expanded access to health and wellness education, reduced gym memberships, fitness classes, and access to a nurse practitioner.

The Health Department has also been busy preparing for accreditation from the Public Health Accreditation Board. This multiple-year process has continued to take shape under the guidance of Health Department Director, Holly Cucuzzella, and Deputy Director, Tina Rizzo. Accreditation takes a hard look at departmental processes, plans, and documentation. At the end Burlington County will have an even better, more efficient Health Department to serve our residents.

BCHD is a tremendous resource for our county. These services are provided to keep up with the life demands of our residents, visitors, and businesses. We look forward to engaging the community and providing services and referrals essential to keeping our residents healthy and enjoying their lives. If you have suggestions that will improve our ability to deliver public health services, please contact the department with your ideas by calling 609-265-5548 or via e-mail, [bchd@co.burlington.nj.us](mailto:bchd@co.burlington.nj.us).

Sincerely,

Bruce Garganio

Freeholder Director, Burlington County Board of Chosen Freeholders



## Message from the Health Department Director

HOLLY CUCUZZELLA

The 2015 Burlington County Health Department Annual Report highlights the programs and services the health department provides to Burlington County residents, visitors, and businesses throughout our 40 municipalities. We strive to make our county a healthy and safe place to live, work, and play; on behalf of the Burlington County Health Department, I thank you for taking the time to review the great work that our department completed throughout the 2015 calendar year.

This past year the Burlington County Health Department was part of a group of South Jersey Health Departments' honored for the Model Practice Award at the 2015 Annual Conference of the National Association of County and City Health Officials (NACCHO). The award celebrates local health departments for developing programs that demonstrate exemplary and replicable best practices in response to a critical local public health need. The South Jersey Mobile Unit Task Force developed processes for inspection staff and standardized applications for mobile food establishments and event coordinators which are utilized and shared by each of the participating health departments in Southern New Jersey. This translates into tangible benefits to our business community and helps ensure continued food safety for our residents.

2015 also brought recognition to some of our talented staff members. Dr. Ian Hood, Burlington County Medical Examiner, was appointed to the regional board of the Gift of Life Donor Program, which coordinates organ and tissues donation in the Southern NJ/Eastern PA area. Lisa Welsh, RN, was nominated and selected for Virtua's Nurse Excellence Award for her commitment to staying informed on the newest evidenced based practices and sharing them with her peers. Agatha Reidy, Director of Nursing, was nominated and selected as the March of Dime's Public Health Nurse of the Year in the category of: Public Health, Occupational Safety & Health. These staff members are well deserving of their recognitions, and goes to demonstrate the level of commitment health department staff have for public health.

Our mission remains to provide health services through education, prevention, and protection to those in Burlington County. To accomplish our mission we work closely with our partners in the local healthcare system, neighboring counties, community organizations, businesses and residents to gather information on what is going on in the community so we can provide better and more appropriate services and programs. BCHD continues to provide preventative services such as adult and child vaccinations to eligible residents, flu shots, blood pressure screenings, STD/HIV testing, fitness classes, and public health education presentations and materials all at no cost.

In order to provide the best services to Burlington County as possible, we need your input and support. I encourage you to let us know how the health department can better serve you and to make use of the services that we provide. For more information on our services please visit our website, [www.co.burlington.nj.us/health](http://www.co.burlington.nj.us/health) or call us at 609-265-5548.

In good health,

Holly Cucuzzella, DrPH, MCHES, HO  
Director, Burlington County Health Department



## Department Contact Information

### Burlington County Health Department

Section	Phone
Administration	609-265-5548
Health Education	
Preparedness & Response	
Animal Shelter	609-265-5073
Communicable Diseases	609-265-5533
HIV Testing	
STD Clinic	
Environmental & Consumer Health	609-265-5515
Virtua Community Nursing Services	609-914-8550
Women, Infants, and Children (WIC)	609-267-4304
<b>After Hours / Central Communications</b>	<b>609-267-8300</b>

### Other Important Numbers

Agency	Phone
Deborah Heart & Lung Center	609-893-6610
Virtua Memorial Hospital	609-914-6000
Lourdes Medical Center	609-835-2900
South Jersey Family Medicine	609-386-0775
CONTACT Help Line	856-234-8888
Burlington County Human Services	609-265-5545
New Jersey Poison Control	1-800-222-1222
Board of Social Services	609-261-1000
Meals on Wheels	609-702-7053
Veteran's Services	609-265-5008
Sheriff's Department	609-265-5127
Department of Resource Conservation	856-642-3850

### Visit BCHD Online

**Website:**

[www.co.burlington.nj.us/health](http://www.co.burlington.nj.us/health)

**Like us on Facebook at:**

[www.facebook.com/BurlingtonCountyNJ](http://www.facebook.com/BurlingtonCountyNJ)

**Follow us on Twitter at:**

@BurIcoNJ

**Email:**

[BCHD@co.burlington.nj.us](mailto:BCHD@co.burlington.nj.us)



## Jurisdictions Served

Municipality	Population <sup>1</sup>	Municipality	Population <sup>1</sup>
Bass River	1,443	Medford Lakes	4,146
Beverly	2,577	Moorestown	20,726
Bordentown City	3,924	Mount Holly	9,536
Bordentown Township	11,367	Mount Laurel	41,864
Burlington City	9,920	New Hanover	7,385
Burlington Township	22,594	North Hanover	7,678
Chesterfield	7,699	Palmyra	7,398
Cinnaminson	15,569	Pemberton Borough	1,409
Delanco	4,283	Pemberton Township	27,912
Delran	16,896	Riverside	8,079
Eastampton	6,069	Riverton	2,779
Edgewater Park	8,881	Shamong	6,490
Evesham	45,538	Southampton	10,464
Fieldsboro	540	Springfield	3,414
Florence	12,109	Tabernacle	6,949
Hainesport	6,110	Washington	687
Lumberton	12,559	Westampton	8,813
Mansfield	8,544	Willingboro	31,629
Maple Shade	19,131	Woodland	1,788
Medford	23,033	Wrightstown	802

<sup>1</sup>Population Data from US Census Bureau, 2010 Census.





## What does Public Health do?

The Burlington County Health Department (BCHD) protects and improves the health and well-being of your community, as well as the environmental resources upon which we all depend.

Since 1900, the average lifespan of U.S. residents has increased by more than 30 years, with 25 years of this gain attributable to advances in public health, such as:

- Vaccination
- Motor-vehicle safety
- Safer workplaces
- Control of infectious diseases
- Decline in deaths from coronary heart disease and stroke
- Safer and healthier foods
- Healthier mothers and babies
- Family planning
- Fluoridation of drinking water
- Recognition of tobacco use as a health hazard

Today, BCHD, along with our sister agencies across New Jersey continue to promote health and wellness.

### The Burlington County Health Department...

- Protects you from health threats. BCHD works to prevent disease outbreaks and makes sure the water you drink, the food you eat, and the air you breathe are all safe. We are also ready to respond to any health emergency — be it bioterrorism, Ebola, Zika Virus, rabies, or a new environmental hazard.
- Educates you and your neighbors about health issues. BCHD provides you with information that helps you make healthy decisions, like exercising more, eating right, quitting smoking, and washing your hands to protect yourself from communicable diseases. During a public health emergency, we also provide important alerts and warnings to protect your health.
- Provides healthy solutions. BCHD offers the preventive care you need to avoid disease and maintain your health. We provide flu shots for all county residents and help mothers get prenatal care to give their babies a healthy start. We also help provide eligible children and adults with immunizations, and help low income families get the good nutrition needed to help them grow and learn through the Women, Infants, and Children program.
- Advances community health. BCHD takes part in developing new policies and standards that address existing and emerging challenges to your community's health while enforcing a range of laws to help keep you safe. We work through research and staff training to maintain expertise and deliver up-to-date, cutting-edge health programs.



## Administration

The Administrative Section is in charge of the organizational structure and management necessary to effectively run the Burlington County Health Department.

**Management and leadership functions include, but are not limited to:**

- Finance
- Fleet Management
- Personnel
- Planning
- Public Inquiries and Communications
- Resolutions and Transmittals
- Public Information
- Recordkeeping
- Community Interaction
- Training
- Inter-Government Liaison
- Information Technology

The Health Officer, Holly Cucuzzella, DrPH, MCHES, HO represents the county and the 40 municipalities within Burlington County in all matters concerning public health, and oversees the performance of all duties necessary to satisfy and enforce federal, state, and local public health regulations. The Administrative Staff performs the many services that keep BCHD running efficiently. Their jobs require knowledge of New Jersey Public Health Practice Standards, statutes, regulations, local ordinances, worker’s compensation, disability, and union obligations.

Administration also works to obtain the necessary financial support for the Health Department to perform its tasks. Administration staff complete grant applications as well as monitor and report on grant expenditures and activities. They also prepare the annual budget and plan for emergencies and future public health needs.

<b>Staffing &amp; Human Resources</b>	
Number of Individual Employees	99
Number of Individual Contract Staff	17
Number of Individual Volunteers	700
Number of Contract Organizations	2
Total Number of Full-Time Equivalent Human Resources Available	105
FTEs of Individual Employees	92
FTEs of Individual Contract Staff	13
FTEs of Individual Volunteers	0
FTEs of Contract Organizations	0



## Health Education

Health Education occurs throughout all Health Department programs, with a focus on providing education and health promotion services that help the public make informed decisions about their health. Health education programs and activities help the community achieve a healthier lifestyle and promote healthy behaviors.

The BCHD Health Education section encourages residents to get and stay healthy through seminars, presentations, exercise classes, workshops and outreach events conducted throughout the county all year long. County residents and agencies can request presentations, materials, and screenings from BCHD on a large variety of public health topics by contacting the Health Department.

The Health Education section is also responsible for implementing the Burlington County Community Health Improvement Plan (CHIP). This plan is updated every 3-5 years when the community health needs assessment is completed. The three public health areas that were identified as areas of opportunity in the county are 1) obesity and overweight populations, 2) chronic diseases, and 3) access to care. Health education sessions focus on these priorities, along with other trending health topics.

Health Education Sessions	
Number of individual presentations, health fairs, and events	93
Number of sites where fitness programs were conducted	14
Number of community fitness programs conducted	289

### The Burlington County Health Department’s Health Education Section:

- Conducts outreach with local schools
- Conducts outreach with local health care providers
- Conducts outreach with local businesses
- Conducts outreach with local faith-based organizations
- Conducts outreach with local childcare providers
- Conducts outreach with other local organizations
- Offers free fitness programs to county residents through our Health Starts Here program
- Maintains BCHD website
- Shares current information with the municipalities and other county departments
- Shares information and produces content for social media
- Broadcasts information via radio
- Disseminates information via print newspapers/newsletters
- Disseminates information via online newspapers/newsletters
- Collaborates with local restaurants to improve menu options for children as part of our Healthy Kids Hero program



## Public Health Preparedness and Response

BCHD is charged with the responsibility to identify, prevent, and respond to any public health threats that may affect Burlington County residents, visitors, and businesses. The Public Health Preparedness and Response section works with staff across the entire department to ensure that BCHD is ready to respond to any public health hazard by continuously maintaining response plans to respond to the following types of emergencies:

- Public Information/Crisis Communication
- Retail Food Safety
- Public Water Supply
- Multi-Family Housing
- Food-Borne Illness Outbreaks
- Chemical, Biological, Radiological, Nuclear, And Explosive (CBRNE) Events
- Infectious Disease Outbreaks
- Hazardous Material Spills / Events
- Raw Sewage Spills
- Isolation And Quarantine
- Natural Disasters

In addition to the activities above, BCHD receives funding from NJDOH to ensure the department is able to fulfill the functions and core public health response capabilities as outlined by the Centers for Disease Control and Prevention (CDC).

### Public Health Preparedness Capabilities:

1. Community Preparedness
2. Community Recovery
3. Emergency Operations Coordination
4. Emergency Public Information and Warning
5. Fatality Management
6. Information Sharing
7. Mass Care
8. Medical Countermeasures Dispensing
9. Medical Materiel Management and Distribution
10. Medical Surge
11. Non-Pharmaceutical Interventions
12. Public Health Laboratory Testing
13. Public Health Surveillance and Epidemiological Investigation
14. Responder Safety and Health
15. Volunteer Management

### Exercises and tests conducted:

- Monthly communications equipment tests
- NJDOH functional communications exercise
- Quarterly staff call-down drills
- Foodborne illness tabletop exercise
- Joint Information Center exercise
- Regional Point of Distribution exercise
- Receiving, Shipping, Storage exercise
- Drive-thru Point of Distribution exercise
- Statewide communications exercise

### Health Alert Network messages sent:

- NJDOH generated: **184**
- BCHD generated: **130**
- Other: **3**
- Major topics: Code Blue activations, Measles, Papal visit



## Burlington County Medical Reserve Corps (MRC)

The Medical Reserve Corps is a national organization of trained volunteers interested in public health and who are ready to serve in the event of a public health emergency or during community health events. Members consist of nurses, physicians, pharmacists, translators, social workers, clerks, paramedics/EMTs, veterinarians, and many more. BCHD continued to keep its MRC members active throughout the year. Members participated in clinics, trainings, and exercises. In 2015, the MRC was deployed to support Camden County during the Papal visit, as well as a multi-county drive-thru flu clinic held in Burlington Township. BCHD is always looking for additional MRC members, for more information visit: [www.njmrc.nj.gov](http://www.njmrc.nj.gov)

### Community Benefit

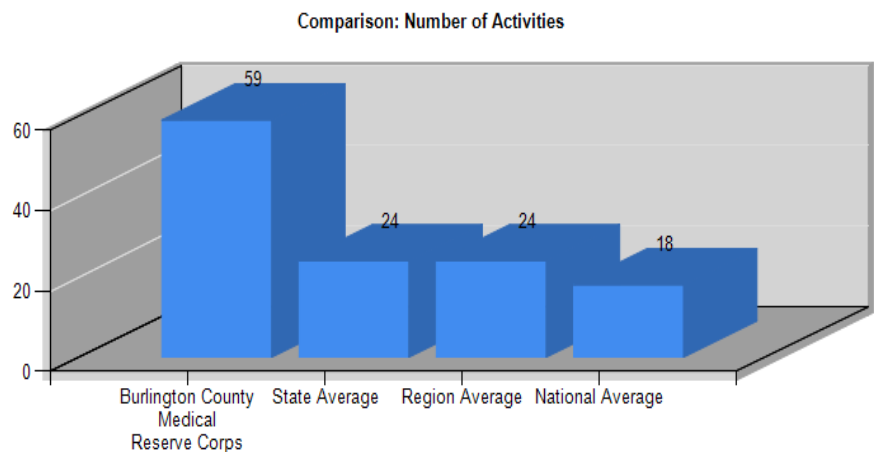
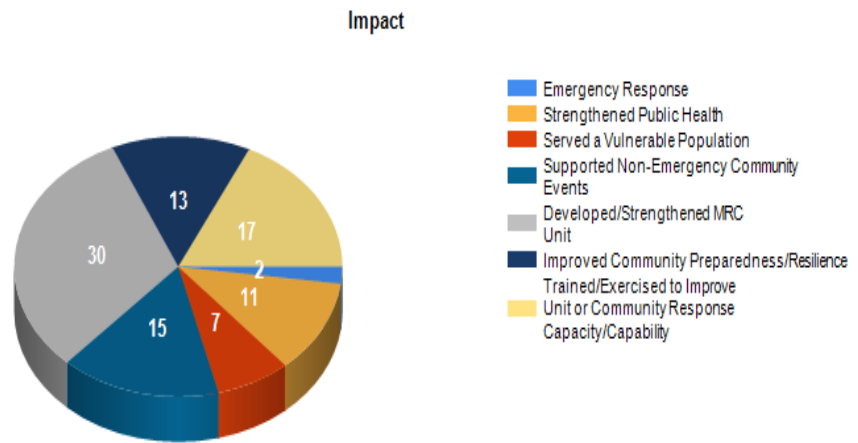
<b>Total hours served</b>	1,072
<b>Approx. Economic benefit</b>	\$27,617

### Membership

<b>Professional members</b>	503
<b>Community health members</b>	197

Between January 1, 2015 and December 31, 2015, Burlington County Medical Reserve Corps reported a total of 59 activities. Because one activity can influence several impact areas, the total number of activities will not match the number of impact areas reflected in the pie chart.

The total activities reported contributed to the following impact areas: 2 emergency responses, 11 strengthened public health, 7 served a vulnerable population, 15 supported non-emergency community events, 30 developed/strengthened the MRC unit, 13 improved community preparedness / resilience, and 17 trained/exercised to improve unit or community response capacity /capability.

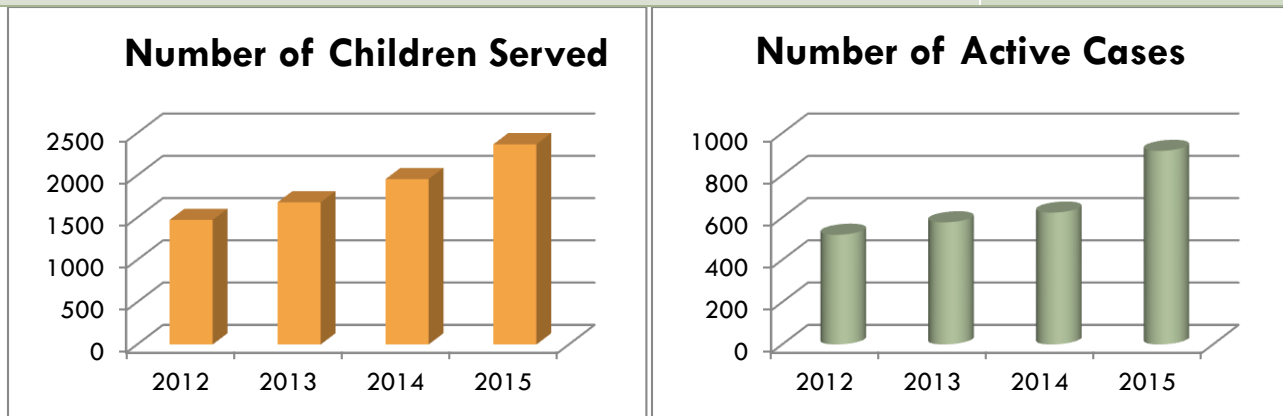


## Community Nursing Service

BCHD partners and contracts with Virtua Health System to provide health promotion services to Burlington County residents. The nurses and staff in the Community Nursing Service work closely with all the sections of the Health Department in order to support the following services:

- Adult Health Services
- Child And Adolescent Health Services
- Childhood Lead Poisoning Prevention
- Chronic Disease Self-Management
- Improved Pregnancy Outcomes And Health Education Home Visits
- Special Child Health Services
- Public Health Clinics
- HIV Testing
- Tuberculosis Control

<b>Special Child Health Services</b>	
Total number of children and families served	2,368
Total number of active cases	916



<b>Improved Pregnancy Outcomes</b>	
Total number of pregnancy tests	211
<b>Tuberculosis (TB)</b>	
Total Direct Observation Therapy (DOT) sessions	1,675
Total number of active TB cases	6
<b>Childhood Lead Program</b>	
Total number of lead blood tests conducted by BCHD	38
Total confirmed positive lead cases reported to BCHD	12
<b>Heart Health Screenings</b>	
Total number of clients screened for high blood pressure	73
Percent with elevated blood pressure results	52.8%



## School Immunization Record Audits

In order to ensure that Burlington County’s children remain safe from certain preventable diseases, BCHD works with local schools and childcare facilities to review the immunization records of their students.

<b>Number of Childcare / Pre-K facilities audited</b>	180 facilities
<b>Number of Kindergarten facilities audited</b>	81 facilities
<b>Number of Grade 6 facilities audited</b>	51 facilities
<b>Number of High School facilities whose transfer school records audited</b>	35 facilities

## Clinical Services

In addition to the services highlighted in the Community Nursing Service section, the Health Department provides certain basic health services to the county’s residents. These services include immunizations, screenings, and treatment for certain diseases. All of the clinical health services that BCHD conducts are provided to qualifying county residents at no cost.

The clinical health services provided at the Health Department are intended to promote wellness, educate, allow for early detection of diseases and illnesses, and ultimately treat or refer to treatment. The overarching goal is to encourage and support the development of more healthful life-style choices.

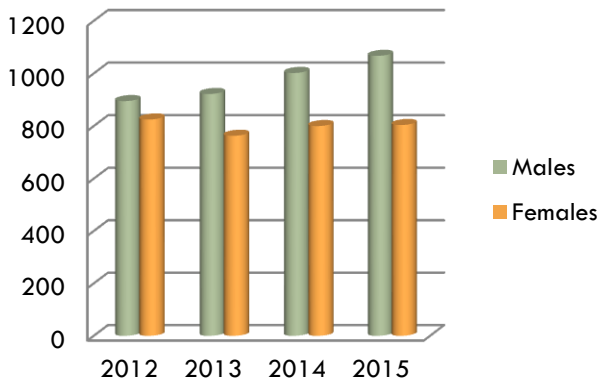
<b>Number of clinic-based medical visits provided</b>	6,576
<b>Number of individuals who received care at clinics</b>	4,257
<b>Number of individuals who received home nursing care</b>	246
<b>Number of referrals to medical follow-up</b>	216
<b>Number of children who received immunizations</b>	708
<b>Number of adults who received immunizations</b>	1,599
<b>Total number of immunizations provided</b>	2,155
<b>Total number of health screenings provided</b>	5,570
<b>Number of individuals screened for Sexually Transmitted Infections (other than HIV/AIDS)</b>	1,871
<b>Number of individuals screened for HIV/AIDS</b>	3,058



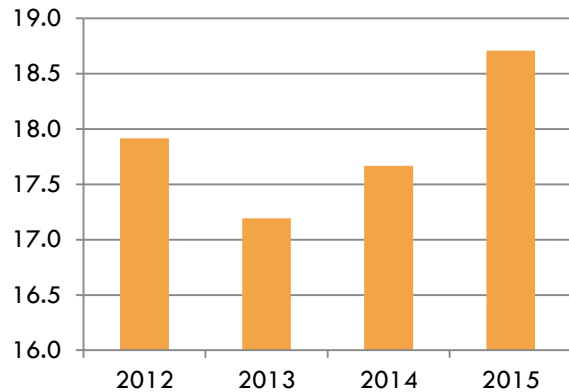
## Sexually Transmitted Diseases (STDs)

Testing and treatment is provided free of charge twice weekly throughout the year at the BCHD clinic. There were 100 clinics held during 2015. There were 1,871 clients tested for STD's during these sessions (1,067 males and 804 females.) Clients are tested for gonorrhea, chlamydia, trichomoniasis, herpes, and syphilis. HIV testing is also offered. All clients receive counseling, and education about prevention. Those whose results are positive are offered treatment and education without charge. BCHD staff works closely with clients to notify partners about any infections or exposures. *The charts below represent clients seen at the BCHD clinic, not the total number of STD cases in Burlington County.*

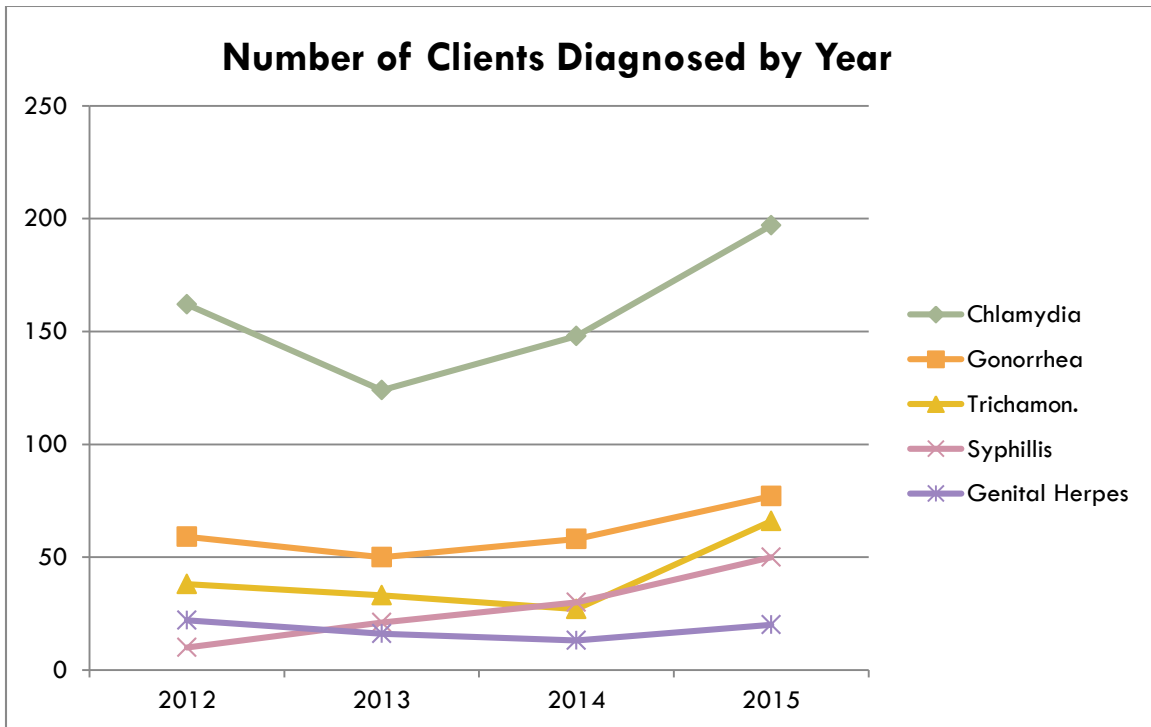
### Total Clients Tested by Gender



### Average Number of Clients per Clinic



### Number of Clients Diagnosed by Year





## Environmental and Consumer Health

BCHD assists residents to resolve certain quality of life issues by investigating, preventing, and correcting conditions or uses of a property that may interfere with residents' use and/or enjoyment of their own properties or that may endanger the environment, or the life, health, or safety of residents.

<b>Investigations</b>	<b>2015</b>
Number of cases investigated	833
Number of cases that required enforcement action	36
Percent (%) of cases that required enforcement actions	4.32%

**The environmental and consumer health section is responsible for the following programs:**

- Air Pollution Control Program
- Water Pollution Control Programs
- Solid Waste Pollution Control Program
- Hazardous Material Program
- Housing Maintenance Program
- Body Art Program
- Childhood Lead Program
- Pesticide Program
- Noise Control Program
- Retail Food Program
- Public Recreational Bathing Program
- Public Health Nuisance Program
- Campground / Youth Camp Program
- Tanning Program
- Right To Know Program
- Wastewater Control Program

### Campground / Youth Camp Program

The Health Department enforces safety and sanitation standards for the operation of camps in Burlington County in order to protect the health and safety of those who make use of these facilities.

<b>Youth camps</b>	
Number of pre-operational inspections conducted	23
Number of routine, operational re-inspections conducted	4
Number of emergency & complaint-related inspections and investigations conducted.	1
<b>Campgrounds</b>	
Number of inspections conducted	10
Number of complaints received	1



## Public Recreational Bathing Program

BCHD conducts safety and sanitation inspections of public recreational bathing facilities to reduce the spread of communicable diseases and protect consumers who use these facilities from avoidable harm and danger.

<b>Number of licensed public recreational bathing facilities</b>	
Number of licensed year-round facilities	34
Number of licensed seasonal facilities	190
<b>Number of public recreational bathing features of each type:</b>	
Swimming / wading pools	215
Hot tubs / spas	20
Aquatic recreation facilities	1
Bathing beach - Lake	18
<b>Number of pre-operational inspections of bathing facilities of:</b>	
Year-round facilities	6
Seasonal facilities	9
<b>Number of routine inspections of bathing facilities of:</b>	
Year-round facilities	72
Seasonal facilities	367
<b>Number of routine re-inspections of bathing facilities of:</b>	
Year-round facilities	7
Seasonal facilities	26
<b>Number of non-routine emergency &amp; complaint-related inspections of:</b>	
Year-round facilities	5
Seasonal facilities	4
<b>Number of individual features closed for health and safety violations:</b>	
	1
<b>Number of public recreational bathing facilities closed for health and safety violations:</b>	
Year-round facilities	0
Seasonal facilities	0



## Body Art Program

The Health Department inspects tattoo, piercing, and permanent cosmetic facilities throughout Burlington County to ensure proper sanitation and safety standards are being followed.

Number of licensed establishments	15
Number of routine, operational inspections	13
Number of routine, operational re-inspections	1
Number of emergency & complaint-related inspections and investigations	1
Number of unlicensed establishments identified	0
Number of body art, tattoo, and permanent cosmetics injuries and illnesses reported	1

## Retail Food Program

BCHD inspects and regulates restaurants, grocery stores, and other retail food facilities to ensure compliance with safety and sanitation rules. The Retail Food Program staff work closely with the Communicable Disease Section to investigate and control disease outbreaks linked to retail food facilities.

<b>Number of licensed food establishments:</b>	
Risk Level 1 - Establishments that conduct minimal food preparation and minimal handling of potentially hazardous foods	206
Risk Level 2 - Establishments that conduct limited food preparation and heat/cool potentially hazardous foods	1,163
Risk Level 3 - Establishments that conduct complex food preparation and heat/cool potentially hazardous foods	539
Mobile Food Establishments	80
Temporary - Establishments operating for no more than 14 consecutive days in conjunction with a single event or celebration	119
Other - Establishments that conduct ONLY specialized processes such as canning	18
<b>Number of retail food establishment plan reviews conducted</b>	<b>112</b>
<b>Number of pre-operational retail food establishment inspections conducted</b>	<b>90</b>



**Retail Food Program (Continued)**

<b>Number of routine inspections for the following types of retail food establishments:</b>	
Risk Level 1 - Establishments that conduct minimal food preparation and minimal handling of potentially hazardous foods	123
Risk Level 2 - Establishments that conduct limited food preparation and heat/cool potentially hazardous foods	1,051
Risk Level 3 - Establishments that conduct complex food preparation and heat/cool potentially hazardous foods	538
Mobile Food Establishments	80
Temporary - Establishments operating for no more than 14 consecutive days in conjunction with a single event or celebration	122
Other - Establishments that conduct ONLY specialized processes such as canning	18
<b>Number of routine re-inspections for the following types of establishments:</b>	
Risk Level 1 - Establishments that conduct minimal food preparation and minimal handling of potentially hazardous foods	8
Risk Level 2 - Establishments that conduct limited food preparation and heat/cool potentially hazardous foods	103
Risk Level 3 - Establishments that conduct complex food preparation and heat/cool potentially hazardous foods	132
Mobile Food Establishments	0
Temporary - Establishments operating for no more than 14 consecutive days in conjunction with a single event or celebration	0
Other - Establishments that conduct ONLY specialized processes such as canning	0
<b>Number of non-routine emergency &amp; complaint-related investigations/inspections:</b>	
Investigations	216
Inspections (other than routine inspections)	21
<b>Number of establishments on which the Health Department had to take one or more enforcement actions</b>	<b>6</b>



### Tanning Program

BCHD enforces safety and sanitation standards for the operation of tanning facilities in order to protect the health and safety of consumers who patronize tanning facilities.

Number of unregistered tanning facilities identified by the Health Department	0
Number of routine inspections of tanning facilities	21
Number of routine re-inspections of tanning facilities	7
Number of non-routine emergency & complaint-related inspections of tanning facilities	0
Number of tanning facilities on which the Health Department had to take one or more enforcement actions	0

### Onsite Wastewater Disposal Systems

The Health Department conducts education, permitting, and inspections of low-volume residential and commercial onsite wastewater treatment systems (e.g., septic systems) to ensure that systems are designed, constructed, and maintained properly, thus improving Burlington County’s water quality and protecting the health of residents as well as the environment.

Number of public sewer system inspections conducted	5
Number of wastewater disposal system plan reviews conducted	527
Number of wastewater disposal system site inspections conducted	92
Number of wastewater disposal system installation inspections conducted	493

### Potable Water Control Program

BCHD conducts inspections and investigations to ensure drinking water is safe and meets standards.

Number of non-public water system plans reviewed	184
Number of non-public water system installation inspections	93
Number of Private Well Testing Act contacts	86
Number of Private Well Testing Act samples collected	14
Number of potable well investigations where the Health Department determined well water to be hazardous to humans	1



## Water Pollution Control Program

BCHD protects surface and ground waters from illegal discharges by inspecting, sampling and investigating complaints.

<b>Surface water</b>	
Number of water samples collected	138
<b>Groundwater</b>	
Number of underground storage tank inspections	87
Number of underground storage tank re-inspections	22

## Air Pollution Control

BCHD conducts inspections of facilities within the county that are sources of air contaminants. Additionally, staff investigates complaints that are received.

Number of outdoor air pollution complaint investigations	42
Number of re-inspections conducted	13
Number of dry cleaner inspections conducted	14
Number of spray booth inspections conducted	16
Number of indoor air pollution complaint investigations	15
Number of “B-source” facility inspections	124
Number of vehicle idling enforcement actions	15

## Noise Pollution Control

BCHD conducts noise pollution investigations and inspections throughout the year based on complaints received.

Number of complaints received	2
Number of re-inspections completed	2



## Solid Waste Control

BCHD is responsible for inspecting and enforcement of solid waste handling and disposal, litter control and inspection of facilities such as landfills, compost facilities, resource recovery facilities and solid waste transfer stations. Additionally, staff routinely monitors recycling centers, convenience centers, and farmland mulch sites.

Number of major landfill inspections conducted	13
Number of transfer station inspections conducted	28
Number of compost facility inspections conducted	53
Number of complaints received	33
Number of waste flow investigations	31
Number of convenience center inspections	70
Number of farmland mulch site inspections	13
Number of recycling center inspections	70
Number of illegal dumping investigations	7
Number of truck checks	38
Number of container inspections conducted	104

## Hazardous Waste Control Program

BCHD responds to and helps mitigate hazardous material incidents that impact the environment and the public's health within Burlington County. Cleanup after an incident is monitored for compliance with regulations and best remedial practices.

Number of complaints received	70
Number of spill or release investigations	47
Number of emergency responses	63
Number of re-inspections	102



### Housing Maintenance Program

The Health Department enforces certain municipalities' local housing codes and ordinances to ensure safe and healthy housing for county residents.

Number of individual dwelling inspections completed	169
Number of violations notices given	42
Number of individual dwelling re-inspections conducted	265

### Public Health Nuisance Program

BCHD conducts investigations into quality of life complaints that pose a nuisance to county residents.

Number of rodent complaints received	78
Number of insect complaints received	66
Number of noxious weed complaints received	19
Number of trash & debris complaints received	24
Number of miscellaneous complaints received	37
Number of violation notices given	13
Number of rodent complaint re-inspections	77
Number of insect complaint re-inspections	304
Number of noxious weed re-inspections	32
Number of trash & debris re-inspections	41
Number of stagnant water complaint inspections conducted	8
Number of miscellaneous re-inspections	98
Number of stagnant water re-inspections	24
Number of cat complaints received	10
Number of cat complaints re-inspections	7





### Pesticide Control Program

BCHD performs routine inspections, and investigates complaints on the use and handling of pesticides.

Number of school inspections conducted	9
Number of landscaper inspections conducted	36
Number of bed bug complaints	16

### Right to Know Program

The Health Department conducts surveys of workplaces through Burlington County to ensure employers follow the New Jersey Right to Know law which requires businesses to properly label chemicals, train employees, keep a log of the chemicals, and post information.

Number of site visits conducted	31
Number of phone calls conducted	24
Number of instances where material was distributed	15

### Tobacco Program

The Health Department conducts investigations relating to the New Jersey Smoke Free Air Act, which bans smoking, including electronic smoking devices, in public and certain workplaces.

Number of complaints received for public smoking	2
Number of complaints received related to sales	1
Number of re-inspections conducted	1

### Lead Poisoning Control Program

BCHD performs lead inspections and investigations to identify homes that may have lead based paint and/or other sources of lead when a child's blood lead level is reported to be elevated.

Number of lead investigations conducted	5
Number of re-inspections conducted	5



## Animal Care and Management

The Burlington County Health Department inspects kennels, pet shops, shelters, and pounds to ensure that these facilities are operating in compliance with sanitation, safety, and animal welfare rules.

<b>Kennels, pets shops, and shelters</b>	
<b>Number of licensed pet shop facilities</b>	13
<b>Number of licensed kennel facilities</b>	31
<b>Number of licensed shelter/pound facilities</b>	1
<b>Number of pre-operational inspections conducted at Pet Shops</b>	1
<b>Number of pre-operational inspections conducted at Kennels</b>	0
<b>Number of pre-operational inspections conducted at Shelter/Pound facilities</b>	0
<b>Number of routine inspections conducted at Pet Shops</b>	13
<b>Number of routine inspections conducted at Kennels</b>	31
<b>Number of routine inspections conducted at Shelter/Pound facilities</b>	1
<b>Number of routine re-inspections conducted at Pet Shops</b>	0
<b>Number of routine re-inspections conducted at Kennels</b>	7
<b>Number of routine re-inspections conducted at Shelter/Pound facilities</b>	0
<b>Number of non-routine emergency &amp; complaint-related inspections conducted at Pet Shops</b>	2
<b>Number of non-routine emergency &amp; complaint-related inspections conducted at Kennels</b>	15
<b>Number of non-routine emergency &amp; complaint-related inspections conducted at Shelter/Pound facilities</b>	0

<b>Rabies vaccination clinics</b>	
<b>Number of pets vaccinated at municipal clinics</b>	4,584
<b>Number of pets vaccinated at county clinics</b>	1,981
<b>Total pets vaccinated</b>	6,565



## Animal bites and rabies control

<b>Number of incidents where an animal bit a human</b>	485
<b>Number of incidents where a rabid or suspected-rabid animal bit a domestic animal</b>	3

### Burlington County Animal Shelter

BCHD operates the Burlington County Animal Shelter where it is able to provide services to residents such as adoptions, and rabies vaccinations. All 40 of Burlington County’s municipalities contract with the Health Department to provide animal shelter services to their residents.

#### Animal Intake

	Dogs	Cats	Other
Surrendered by owner	731	984	9
Stray/Impounded	840	2,221	75
Other (e.g. cruelty investigation, animal bite/vicious dog cases)	51	24	0
<b>Total</b>	<b>1,622</b>	<b>3,229</b>	<b>84</b>

#### Animal Outflow

	Dogs	Cats	Other
Reclaimed by owner	549	66	1
Adopted	644	1,366	5
Euthanized (Includes surrenders requiring euthanasia and feral animals)	239	1,089	55
Transferred to other shelter/pound/rescue	175	518	3
Other (includes fostering)	16	266	1
<b>Total</b>	<b>1,623</b>	<b>3,305</b>	<b>65</b>

#### Animal Inventory/Capacity

	Dogs	Cats	Other
Beginning number of animals as of January 1, 2015	90	75	0
Ending number of animals as of December 31, 2015	31	84	0
Overall animal capacity at shelter	107	240	N/A



## Weights and Measures

The Health Department is responsible for testing and “Sealing” all weighing, measuring, and counting devices used in commerce throughout Burlington County by enforcing the New Jersey Weights and Measures law. This is to ensure consumers in the county get what they pay for.

Annual Inspections	Annual Inspections	
	Approved	Condemned
Scales	2,166	80
Balances	176	6
Pill Counters	135	1
Weight Kits	143	0
Linear Devices	167	0
Fuel Oil Meters (Fuel trucks, home heating oil)	164	12
Service Station Pumps	4,274	228
Timing Devices	1,255	60
Taxi Meters	6	0
Water Dispensers	6	3
Coin Machines	13	0
	<b>Total Devices</b>	8,536
	<b>Total Sites</b>	1,399

Annual Investigations	Annual Investigations	
	Site Visits	
Consumer Complaints	10	
Reweigh Audits	43	
Price Verification Audits	115	
Label Inspections	13	
Registration Inspections	40	
Out of Business Inspections	10	
Miscellaneous Investigations	41	
	<b>Total</b>	262

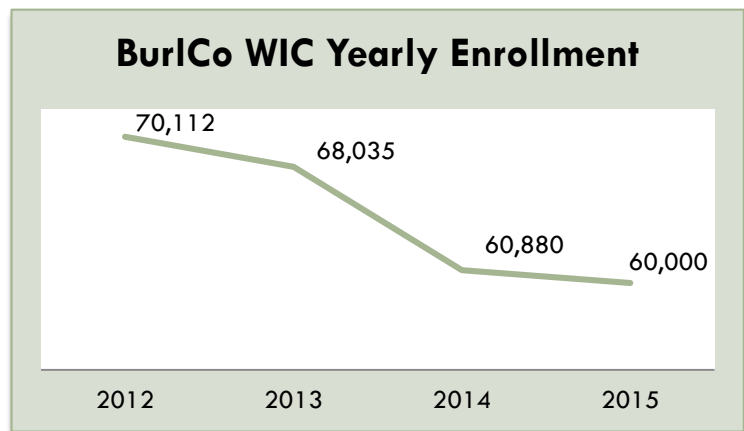


Annual Litigations	Litigations
Price Verifications Audits	69
Reweigh Audits	43
Label Audits	4
Other (Gas Stations)	4
<b>Total Litigations</b>	<b>120</b>
<b>Total Civil Penalties</b>	<b>\$80,750</b>

## Women, Infants, and Children (WIC)

BCHD supports income eligible families by providing low income pregnant, postpartum, and nursing women, along with their children up to age five with supplemental nutrition. This program is made possible through funding from the United States Department of Agriculture’s Food and Nutrition Service via the New Jersey Department of Health.

The Burlington County WIC program had a yearly enrollment (FFY’15) of **60,000**, serving more than **93% of estimated eligible residents** during the time period. This translates into **\$3.714 Million food dollars** redeemed in the county. Additionally, the WIC program continues to provide vouchers for the Farmer’s Market program to be redeemed at our local farm markets.




Burlington County, along with WIC nationwide, has seen a reduction in enrollment within the WIC program as the graph above demonstrates. This can be attributed to a number of factors. The National WIC program specifically mentions: fewer births, which reduce the potential pool of WIC-eligible participants; and improving economic conditions, since applicants’ incomes must be at or below 185 percent of poverty, the number of people eligible for WIC is closely linked to the health of the economy.

## Medical Examiner’s Office

The Health Department also houses the Burlington County Medical Examiner’s Office. The ME’s office conducts medico-legal death investigations so that the forensic pathologist may determine the decedents’ cause and manner of death. The investigations entail collection and recovery of the decedents, recovery and collection of forensic and physical evidence that may include the victims’ personal effects. The ME’s Office also provides assistance to help with the identification of those decedents. During 2015, the Burlington County Medical Examiner’s Office investigated **931 cases**.







**Burlington County Health Department**  
*Health Starts Here*

*Vision*

**Working Together Today for a Healthier Tomorrow**

**Teamwork**  
working efficiently through coordinated efforts with the common goal of public health

**Compassion**  
exercising consideration, humanity and respect for the diverse residents of Burlington County

**Dedication**  
commitment to protecting the health and well-being of Burlington County

*Mission*

**Providing Public Health Services to Burlington County through Education, Prevention and Protection**

