

Burlington County CCRHVA- Public Meeting

Burlington County & NJDEP Program Visioning and Project Kick-Off

Tonight's Agenda

- Presentation
 - Overview of the Burlington County CCRHVA project
 - Meeting purpose and goals
 - Future engagement opportunities
- Community Visioning
 - Four breakout stations



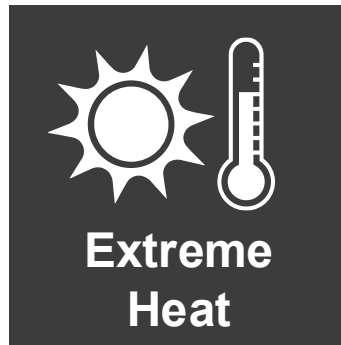
Burlington County Climate Change-Related Hazard Vulnerability Assessment (CCRHVA) – Public Meeting

April 2025

This work was made possible with financial assistance from the Coastal Zone Management Act of 1972, as amended, administered by the Office for Coastal Management, National Oceanic and Atmospheric Administration (NOAA) through the New Jersey Department of Environmental Protection, Coastal Management Program.

Resilient NJ Program Overview

- This program aims to strengthen the County's resilience to the effects of:



From the MLUL:

- Municipalities must consider environmental effects associated with climate change, including, but not limited to, extreme weather, temperature, drought, fire, flooding and sea-level rise; and contain measures to mitigate reasonably anticipated natural hazards, such as coastal storms, shoreline erosion, flooding, storm surge, and wind.

Resilient NJ Program Overview

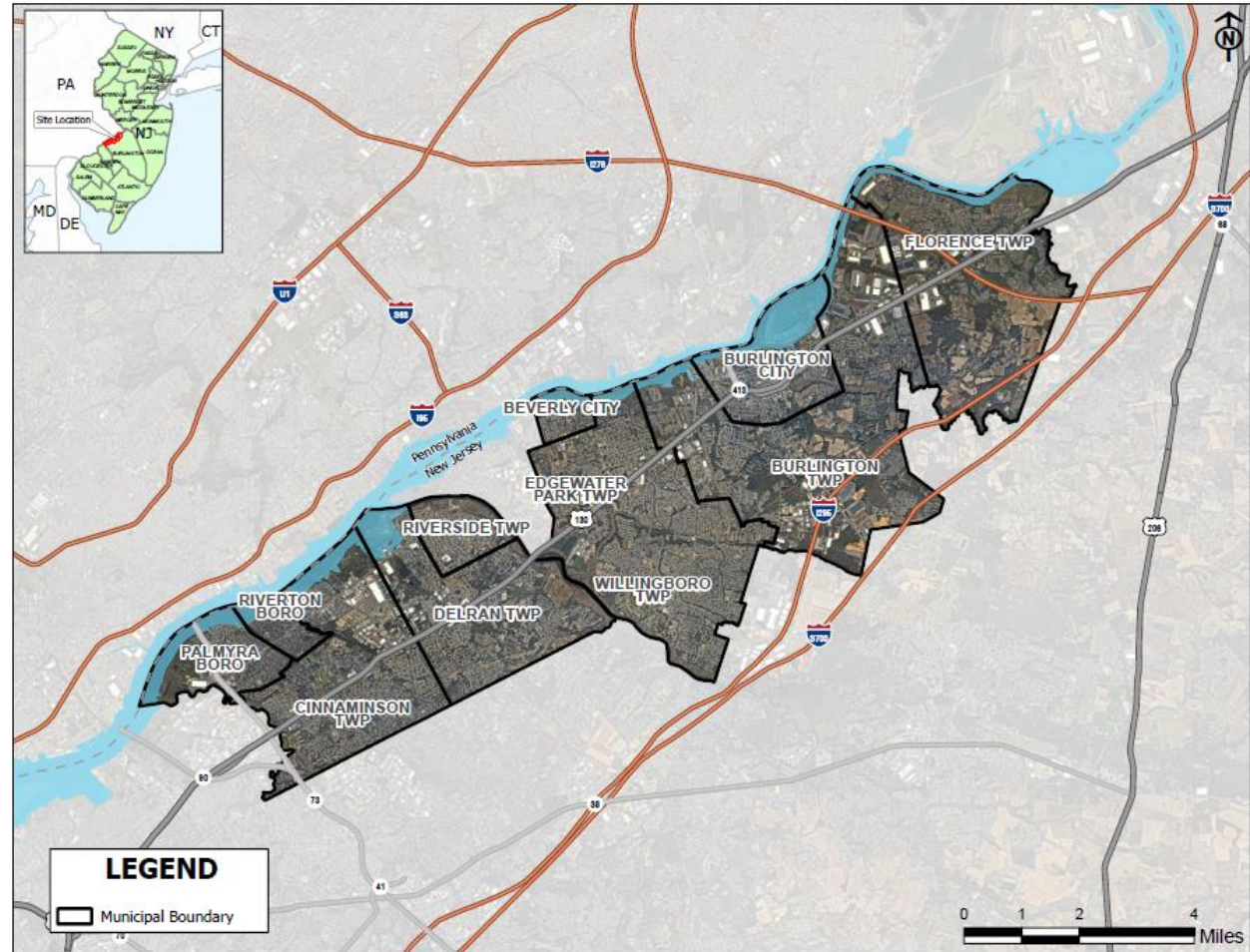
- Resilient NJ is an assistance program to support local and regional climate resilience planning.
- As of February 2021, municipalities in NJ are **required** to incorporate a climate change-related hazard vulnerability assessment into any Master Plan Land Use Element.
- Key elements of the **CCRHVA**
 - Analyze current and future threats to, and vulnerabilities of, the municipality associated with climate change-related natural hazards
 - Include a build-out analysis of future residential, commercial, industrial, and other development in the municipality
 - Identify critical facilities, utilities, roadways, and other infrastructure
 - Analyze the potential impact of natural hazards on relevant components and elements of the master plan
 - Provide strategies and design standards that may be implemented to reduce or avoid risks associated with natural hazards
 - Include a specific policy statement on the consistency, coordination, and integration of the CCRHVA with other municipal planning documents

NJDEP's *Local Planning for Climate Change Toolkit*, breaks down the planning process into four steps:



Where will the work be concentrated?

- Beverly City
- Burlington City
- Burlington Township
- Cinnaminson Township
- Delran Township
- Edgewater Park Township
- Florence Township
- Palmyra Borough
- Riverton Borough
- Riverside Township
- Willingboro Township



Key Definitions & Concepts

Vulnerability can be broken down into the following three elements:



Exposure

The degree to which a **climate variation or change may affect** people, places, or systems



Sensitivity

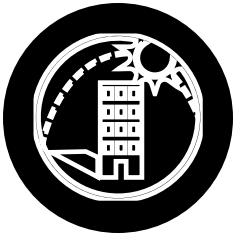
The degree to which people, places, or systems **could be harmed by that exposure**



Adaptive Capacity

The degree to which people, places, or systems **could mitigate the potential for harm by taking action** to reduce exposure or sensitivity

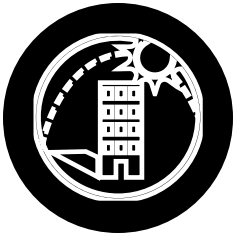
NJDEP Resilience Definition



Resilience

“The ability of social and ecological systems to absorb and adapt to shocks and stresses resulting from a changing climate, while becoming better positioned to respond in the future.”

NJDEP Resilience Definition



Vulnerability

The extent to which people, places, systems, or things are prone to, or are unable to cope with, adverse impacts of climate change.

NJDEP Resilience Definition



Vulnerability Assessment

Combines **exposure, sensitivity, and adaptive capacity** to evaluate how climate change will affect an identified population, place, or system.

Meeting Purpose and Goals

Through this meeting, we hope to achieve the following goals:

- Gather local knowledge and expertise to inform the vulnerability assessment (what we can't just learn from looking at maps and data)
- Identify what is most important and unique about your town to develop a vision statement for community resilience

Climate change can affect communities in many ways. We need your help and local knowledge to understand what is important to you to ultimately identify solutions that best meets the community's resilience needs and supports its long-term goals.

Future Engagement Opportunities



Future public (virtual) meeting:

- *Present preliminary vulnerability assessment results and resilient action item portfolio*

Stay informed by visiting:

- <https://www.nj.gov/dep/bcrp/resilientnj/projects.html>

Table Stations



Climate Concerns

What are your biggest questions or concerns regarding climate change?



Problem Areas

Where have you seen flooding or other hazard impacts in the past?



Community Assets

What places or qualities of life may be threatened by climate change?



Resilience Visioning

What do you want to see achieved through this effort?

Contact Us

Tom J. Stanuikynas

Supervising Planner

County of Burlington

Department of Public Works

Division of Engineering

609-265-3737

tstanuikynas@co.burlington.nj.us

Sara Margolis, ENV SP

Project Manager

Dewberry Engineers

646-434-3359

smargolis@dewberry.com

Thank You

April 2025