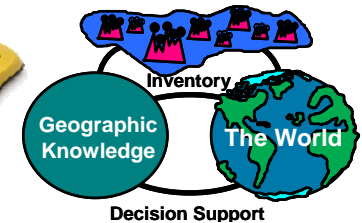
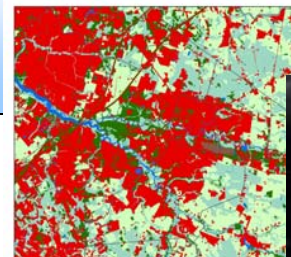




Join us In Celebrating GIS Day!  
GIS Day at Burlington County College,  
November 9, 2011



## What is GIS?

More than one million people across the globe rely on geographic information system (GIS) technology to solve problems and make better decisions by thinking and planning geographically. GIS combines computer hardware, software, and data to collect, manage, and analyze geographic information.

With GIS, users can view relationships, processes, patterns, and trends in the form of maps, globes, reports, and charts. From mapping wildfires to finding the best location for your favorite coffee shop, GIS helps people see how the world works and changes.

## What is GIS Day?

Since 1999, more than 10,000 organizations have participated in GIS Day by hosting events such as open houses, hands-on workshops, community expos, career fairs, school-wide assemblies, and mapping projects. GIS Day success is due to the hard work and dedication of GIS users around the world who see the importance of sharing their GIS knowledge with others.

## Learn how GIS & GPS are used!

GIS is used by many organizations for mapping, analysis, and decision making. Join us to find out how it is being used in our area to help people discover accessible destinations in Philadelphia, assist college students to do mapping for the National Guard, map crimes, look at sea level rise and climate change and much more!

## Who Should Attend?

All individuals interested in how geography, through the technology of GIS, affects your everyday life!

Organizations which use GIS are invited to display maps in the Map Gallery. Maps submission deadline is November 7<sup>th</sup>. For more information or to display a map in the Gallery, contact: Merrilee Torres at 609-702-7067 or mtorres@co.burlington.nj.us

## Event: GIS Day at Burlington County College

Date: Wednesday, November 9, 2011  
Time: 9:00-4:30 Map Gallery  
9:00 am – 12:00 pm Speakers  
12:00 pm – 1:00 pm Lunch  
1:00 pm – 2:15 pm GPS Outdoor Field Activity  
2:30 pm – 4:30 pm Hands-on GIS Lab Exercise  
Location: Burlington County College  
Mount Laurel Campus,  
Laurel Hall & Technology Buildings  
3331 Route 38  
Mount Laurel, NJ 08054

## Description

GIS Day will kick off with a morning of speaker presentations highlighting GIS and GPS applications across various industries. The afternoon will be hands-on GPS and GIS exercises using professional equipment and software. A Map Gallery will be on display throughout the day. This is also an opportunity to learn about BCC's Geospatial Technologies program.

Participants can take part in activities where prizes will be awarded.

The event is free and lunch will be provided.

**Seating is limited and registration is requested.**

**For more information and registration go to: [www.co.burlington.nj.us/DIT](http://www.co.burlington.nj.us/DIT) or [http://www.surveymonkey.com/s/GIS\\_Day](http://www.surveymonkey.com/s/GIS_Day)**