

## Thank You...

*A special thank you to the following individuals and organizations for providing historical information and artifacts about the Rancocas Creek.*

Burlington County Board of Chosen Freeholders  
Burlington County Division of Parks staff

~~

John Anderson

Dr. Christopher Barton

Burlington County Historical Society

Carolyn Chang, Mayor of Westampton Township

Churchville Nature Center  
Bucks County Parks

Delran Historical Society, Sue and Ted Huesken

Eleanor Gesensway

Ned Gilmore, Collections Manager  
Academy of Natural Sciences

Pierre Lacombe, United States Geologic Survey

Alicia McShulkis

Mount Holly Historical Society

New Jersey Department  
of Environmental Protection

New Jersey State Archives

Marilyn Phifer

Prison Museum Association

Hal Pschunder

Red Dragon Canoe Club

Riverfront Historical Society, Dr. Audrey Henry

Lynn Tishner

William Treusch

Arthur Weyman

Winzinger Family

Joyce Wright

## THANK YOU FOR SUPPORTING THE ARTS IN BURLINGTON COUNTY!

### BURLINGTON COUNTY GALLERIES & MUSEUMS

#### Worker's House & Gallery

#### Underground Railroad Museum

803 Smithville Road, Eastampton, NJ 08060

#### Historic Prison Museum

#### Warden's House Gallery

128 & 150 High Street, Mount Holly, NJ 08060

#### Hours:

Thursday-Saturday 10am-4pm; Sunday 12pm-4pm

~

#### Smithville Mansion Annex Gallery

803 Smithville Road, Eastampton, NJ 08060

#### Hours:

Thursday-Saturday 10am-4pm  
*Annex Gallery is closed in November and January*

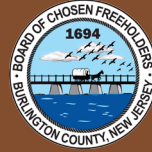
~

#### Burlington County Lyceum of History and Natural Sciences

307 High Street, Mount Holly, NJ 08060

#### Hours:

Monday & Tuesday 10am-7pm  
Wednesday-Friday 10am-6pm; Saturday 10am-3pm



SPONSORED BY THE  
BURLINGTON COUNTY BOARD OF CHOSEN FREEHOLDERS  
Bruce Garganio, *Director* • Joseph Howarth, *Deputy Director*  
Aimee Belgard • Joseph Donnelly • Joanne Schwartz

#### Burlington County Division of Parks

803 Smithville Road, Eastampton, NJ 08060

#### Business Office Hours:

Monday-Friday 8am - 5pm; *Closed Holidays*

**Phone:** 609-265-5858

**Email:** parks@co.burlington.nj.us

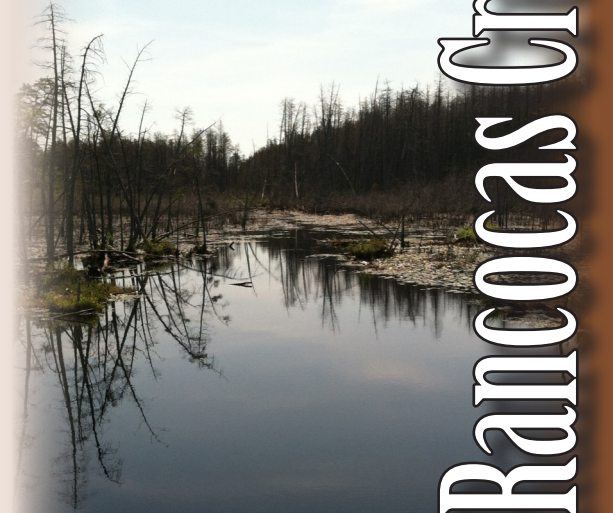
**Website:** www.co.burlington.nj.us/parks



Persons in need of special accommodation should give a two-week notice by calling 609-265-5858, or email parks@co.burlington.nj.us



Funding is made possible in part by the New Jersey State Council on the Arts/Department of State, a Partner Agency of the National Endowment for the Arts from a grant to the Burlington County Board of Chosen Freeholders, Department of Resource Conservation, Division of Parks.

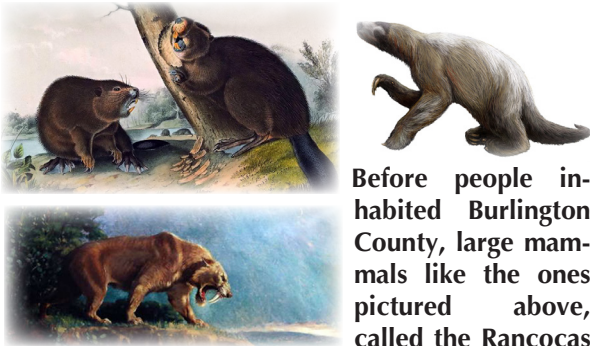


# Discovering the Rancocas Creek

*An informative look at the Rancocas Creek from prehistoric times to the present.*

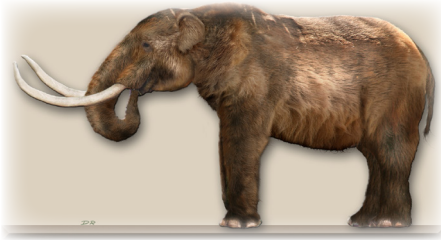
Burlington County Lyceum  
of History and Natural Sciences  
307 High Street  
Mount Holly, NJ 08060

## PREHISTORIC CREEK



Before people inhabited Burlington County, large mammals like the ones pictured above, called the Rancocas

Valley home. The fossilized remains of these animals are on loan from the Academy of Natural Sciences, Philadelphia.



## NATIVE AMERICANS



11,000 years ago, humans started populating the Rancocas Valley. Native Americans relied on the Rancocas Creek for fishing and trapping, as well as transportation and irrigation. Before European contact, the Native Americans relied on stone tools.

## TIMBUCTOO

Free African-Americans established a community known as Timbuctoo beginning in the 1820's. Over the next century and a half, the people here would fight for their freedom from slavery as well as take up arms during the Civil War. An archeological dig was held on site in 2010 proving its cultural significance.



## COMMERCE



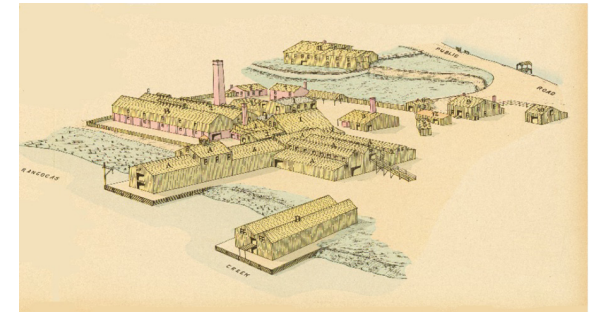
Early Europeans saw the Rancocas Creek's potential as a power source and began to set-up mills. The creek became the main route of transportation for raw materials, as well as people traveling between the area and Philadelphia.

## RELAXING ON THE RANCOCAS



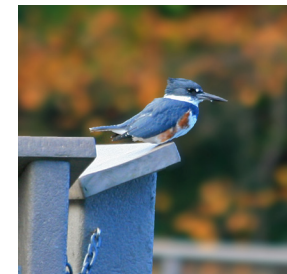
By the 1930's, families from Camden and Philadelphia began spending their summers along the Rancocas Creek. Over 300 summer cottages were built between Smithville and Mount Holly alone. This area became a haven for musicians and artists alike.

## MAIN BRANCH



The eight mile stretch of the Rancocas Creek is home to a diverse history. In 1870, the owners of the above phosphorus plant felt the location was so remote they named it "Texas." Ten years prior, a French inventor tested his submarine prototype in hopes of obtaining a contract with the United States Navy.

## THE RANCOCAS TODAY



Whether it's history or hiking, there is something for everyone to enjoy in the Burlington County Parks System! With more than 1,000 acres of developed parkland, 3,500 acres of land slated for park development, and a regional trail system that will provide a link between the parks, the residents of Burlington County can enjoy natural settings, recreational water access, picnic facilities, and play areas that are close to home.

